

Lasershow Designer 2000 software/hardware

The world's most popular system for producing laser shows

Lasershow Designer 2000 is by far the world's best-selling and most-used system for creating and displaying laser shows. It is simple enough that first-time users can play shows "out of the box" within minutes. Yet, it also has the depth and power to create the world's most complex laser shows, involving dozens of projectors and million-dollar budgets.

Lasershow Designer 2000 is the all-in-one solution. It is so comprehensive that by using a portable computer, your entire laser production system -- including synchronized music and on-screen previews -- can fit into a single airline carryon bag.

It works with conventional lighting, both as a DMX controller and to be controlled by DMX cues. And, it works with standard computer graphics programs, such as AutoDesk 3ds Max, to make it easy to create graphics and animations.

A complete laser system

Here's how you can create a show even while on the road at a client's site:

- With a digital camera, capture the client's image as a digitized photo. LD2000's amazing raster feature turns the image into a TV-like laser-projected photograph.
- Load in one of the over 100 shows included free with LD2000. Many of these shows have won ILDA or other industry awards.
- Customize with additional images from LD2000's collection of over 300,000 laser clip art frames. Or, call up clip art from the web or other sources, and use *TraceIt*, or *LC-FLASH* to convert it into a laser (vector outline) frame.
- Load an audio CD, or call up an MP3 file. Mark beats by tapping the keyboard in time to the music. Then drag-and-drop laser frames onto the timeline, snapping to the exact musical beats.
- Drag-and-drop moving lights and other DMX cues onto the timeline to create a true multimedia experience. (It works the other way too -- DMX boards can send cues to LD2000 as well.)

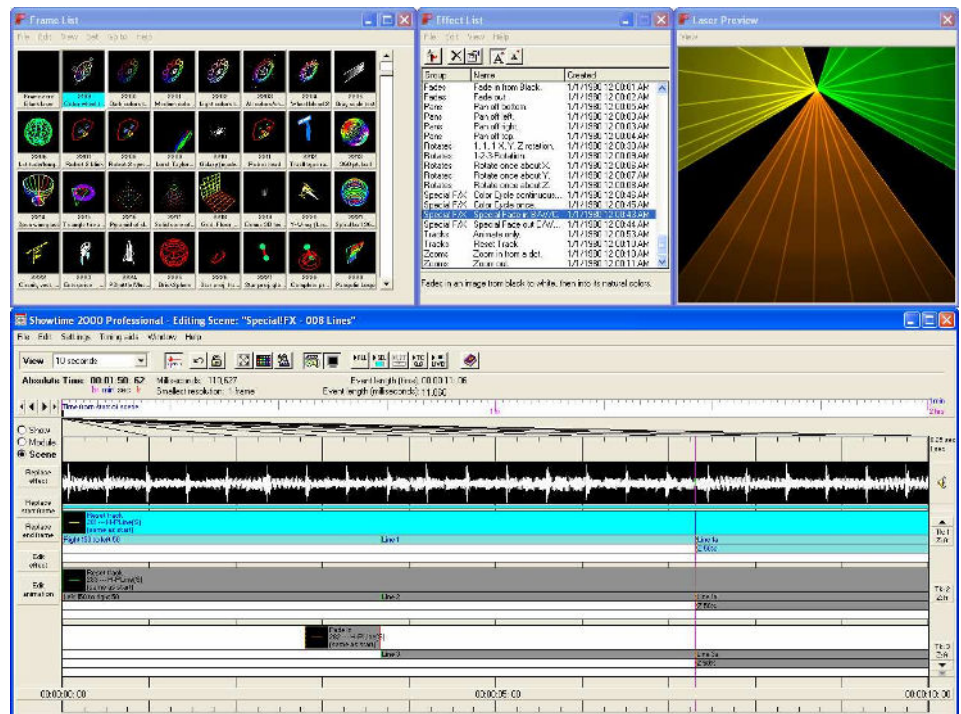
- Preview the show in full color on the computer monitor, complete with simulated fog for the beams. This is ideal for checking last-minute changes, or for a client approval presentation -- no laser projector is needed.

Advanced laser-specific features

LD2000 has literally hundreds of special laser-only features. For example, you can set up "zones" so a single projector can hit different screens, each with its own size, position, geometric correction, audience projection areas, etc.

These features, many of which have won ILDA Technical Awards, assure you that LD2000 truly is professional quality. That's why, in the past decade, more ILDA Artistic Award winners have been created with *Lasershow Designer* than with all other laser programs combined.

No wonder LD2000 is by far the world's most popular laser system, with over 5000 systems in use, in over 63 countries.



Create shows by dragging frames (upper left) onto the timeline (bottom) and adding effects (upper center). This flexible method lets you take a frame and use many different effects, or make an effect that can modify any frame or animation. The resulting show can be previewed on the computer screen (upper right).



Pangolin Laser Systems, Inc. A world leader in software and systems for laser shows and displays

www.pangolin.com • contact@pangolin.com

(+1) 407-299-2088 phone • 407-299-6066 fax • 9501 Satellite Boulevard, Suite 109 • Orlando, FL 32837 USA

LD2000 includes everything you need to create and present professional quality laser shows

A *Lasershow Designer 2000* system includes LD2000 software programs; free shows, frames and tutorials; and a QM2000 card. Here's what you get with your system:

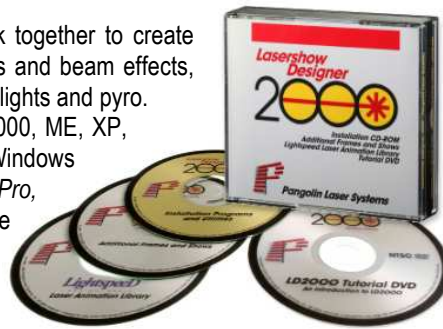
LD2000 software

The LD2000 suite of programs and utilities work together to create and sequence images into animated laser shows and beam effects, all played back with audio, video, DMX-controlled lights and pyro.

The software runs on Windows computers (2000, ME, XP, Vista). It can also run on a Mac under Windows emulation. There are three versions of LD2000: *Pro*, *Basic* and *Intro*. (The top-level versions have more features and capabilities.)

LD2000 software includes:

- **LD2000** -- Drawing and 3D graphics, for creating and editing frames
- **Showtime** -- Timeline-based show creation and playback program
- **Autoplay** -- Simple, automatic show playback program, with scrolling text capability
- **Live!** cue triggering utility -- Perform at live events such as corporate theater
- **LivePRO** visual synthesizer -- The ultimate live "laser DJ" program (free with LD2000 *Pro*, extra-cost option for LD2000 *Basic* and *Intro*)
- **TraceIT** -- Bitmap graphic tracing utility automatically turns pictures into laser outlines
- **Lasershow Video VST** -- Real-time video to laser converter
- **Asteroids** -- The laser version of the classic video game
- **AVS** -- Laser/music visualization plug-in for the popular media player called Winamp
- **Lasershow Converter FLASH** -- Convert Adobe *Flash* graphics to laser (free with LD2000 *Pro* and *Basic*; extra-cost option for LD2000 *Intro*)
- **Lasershow Converter 4D** -- Convert MAXON *Cinema 4D* graphics to laser (free with LD2000 *Pro* and *Basic*; extra-cost option for LD2000 *Intro*)
- **Lasershow Converter ADAT** -- Convert old ADAT shows to LD and ILDA formats



Every LD2000 system comes with six different languages built-in: English, German, Spanish, Portuguese, French and Chinese. Run LD2000 in the language that's most familiar to you.

Free shows, frames and tutorials

You can get started right away with your LD2000 system. More than 100 free shows and demos are included; 15 of the shows come with royalty-free music supplied by Pangolin. (See list at right for a sampling of these shows.)

For "laser clip art", there are over 300,000 laser frames and animations available. This includes the complete Lightspeed Design library, from one of the top award-winning laser show companies. And a free tutorial DVD shows you how to use the main features of the LD2000 and Showtime programs.

QM2000 hardware card

The QM2000 card goes in a PCI slot in a desktop computer, or in a QM2000.NET box on your laptop's network. The QM2000 is a "laser computer on a board." It has its own microprocessor, memory and D/A converters.

Because the QM2000 does all of the crucial calculations, and holds all of the laser frames and show content, at least one QM2000 must be present in the computer or on your network, in order for the LD2000 software to operate. This is called the QM2000 "master" board.

You can have a total of 30 QM2000 boards connected to a computer, to control additional projectors. Typically, for large shows involving many projectors, you would use Pangolin's QM2000.NET device at each projector and link them with Ethernet.



A sampling of the laser shows included free with LD2000

LD2000 includes the laser shows (songs) listed below, plus many more. Tracks listed are suggested songs/artists that go well with the show. You should secure the appropriate rights before playing these songs in public. Some songs come with royalty-free (RF) music tracks provided by Pangolin on the LD2000 CD. **Green color** indicates award winners.

Beam shows

- **Again!** (Pangolin RF)
- **Clockwork Orange** (soundtrack)
- **Conradanza** (Vanessa-Mae)
- **Duel of the Fates** (Star Wars Ep. 1)
- **Eternity** (Pangolin RF)
- **Far From Over** (Staying Alive)
- **LSDI Beam show** (any fast disco)
- **Mission: Impossible** (soundtrack)
- **Reflections** (Reflections of Earth)
- **Special!FX** (Pangolin RF)
- **Spring** (Pangolin RF)
- **Star Wars** (Main Title)
- **Turn the Beat Around** (Gloria Estefan)

Graphics shows

- **1999** (Prince)
- **40 Hour Week** (Alabama)
- **All Together Now** (Beatles)
- **Atlantis** (The Big Blue soundtrack)
- **Celebration** (Kool and the Gang)
- **Creation** (The Mind's Eye)
- **Headed for the Future** (Neil Diamond)
- **Halloween songs**
 - **Thriller** (Michael Jackson)
 - **Crypt Jam** (Tales from the Crypt)
 - **Ghostbusters**
 - **Addams Family**
 - **Monster Mash**
- **Linea** (Pangolin RF)
- **Mission: Impossible** graphics show
- **Money/Us and Them** (Pink Floyd)
- **Purple People Eater** (Sheb Wooley)
- **Sentimental Journey** (Equivel)
- **Striptease** (Twilight Zone/Golden Earring)
- **Storms in Africa** (Enya)
- **Timeshow** (Time, Pink Floyd DSotM)
- **Tuesday's Day Off** (The Big Blue)
- **World in Motion** (Pangolin RF)