

e-Catalog

2025

Updated Oct '25

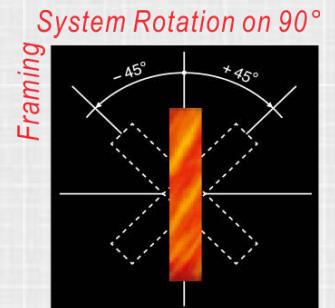


LIGHTING CO.

A range of Professional series of LED based Stage / Theatre / Studio Lighting Equipment

A unit of Dhawan Stagecrafts (P) Ltd.

Possible Framing Shapes



LED Moving Head BSWF - 1000 Framing

Item Code:- DLMH-1000PS

A Hi-Power professional LED Moving Head 4-in-1 "**B**eam-**S**pot-**W**ash-**F**raming" Profile Spot light fixture, with **CMY**, using a sheer 1000w of LED power – with brightness comparable to any +2500 HMI lamp fixtures. Suitable for Mid to Large sized Theatre / Auditorium lighting. Highly recommended for use in theatrical applications including Set lighting, creating animated gobo projections, or where a highly controlled & precise area lighting is required. It features four programmable Beam Shaping Shutters with $\pm 45^\circ$ Indexable option...

Technical Specifications & Features:

- Hi-power White LED Engine: 800w with Color Rendering Index $Ra \geq 70/80/90$
- 16-bit Smooth resolution for PAN & TILT movement - 540° PAN & 270° TILT
- 13-Lense Optical System with Zoom : 5.5° to 50°
- CMY Colour Mixing + 1 Color Wheel with 5 dichroic filters plus open and a Variable CTO Filter
- 4 Framing Shutters, with adjustable angles with entire Framing Module rotatable $\pm 45^\circ$
- 1 Rotating Gobo wheel with 7 inter-changeable Gobos plus open + 1 Static Gobo wheel with 9 Gobos
- 1 Animation Wheel - rotating in both directions at variable speed
- 1 Rotating 6-Facet Prism with adjustable speed + 1 Frost Filter
- 0-100% linear Flicker-Free Dimming and Electronic Strobe Effect with variable speed
- DMX operation – 42,43,49 & 50 DMX channels, **1:1 matching with ROBE eSprite** - with **RDM**
- LCD Display for setting all parameters
- Power: 100-240 VAC 50/60 Hz, 1400w
- Weight: 24 Kg



Gobo & Animation Discs

3-in-1 18R BSW Moving Head with CMY

Item Code: DLHY-380 cmy

This 3-in-1 Hybrid Moving Head BSW fixture is special and unique luminaire, using OSRAM SIRIUS HRI 370W LL lamp - with an unprecedented brightness. An excellent spotlight, with CMY color filters, which produces an outstanding large light beam and with a ZOOM ranging from 2 degree to 50 degrees!

Technical Specifications & Features:

- Lamp: 18R OSRAM SIRIUS HRI 370W LL lamp (7600K , 2000hours)
- CMY filters with infinite color mixing
- 3 No. Color Wheels with 7 color each (total 21 colors) + open ; Bi-direction rotation
- 2 No. CTO (2500k & 3200k) + 1 No. CTB Filter
- Zoom: 2° to 50° Linear
- 1 No. Rotating Gobo Wheel with 7 gobos + open, with shaking effect
- 1 No. Animation Disc for special dynamic effects
- Strobe – variable form 1-25 Hz ~ Heavy Frost ~ Focus
- 1 No. Linear Prism + 1No. 16 facet prism – both Rotating with Overlay
- DMX 512 control channel: 27 & 36 CH ; Supported with RDM
- Pan: 540degree (16bit) & Tilt: 270degree (16bit) with Auto-Repositioning
- Voltage: AC100-240V, 50/60Hz ; with Powercon IN & OUT
- Product Size: 380X460X840mm ~ N.W: 24 Kg



SHARPY BEAM-295

Item Code:- DLSB-295

Sharpy BEAM-295 is a 295w moving beam light, using a new Osram NEOLUX Stage 14R lamp, with an unprecedented brightness usually achievable only with far greater wattages. Weighing just 15 kg, Beam-295 produces a perfectly parallel, laser-like beam with an incredible output. With the use of high-speed 3-phase motors, the PAN & TILT speeds are fast & silent.

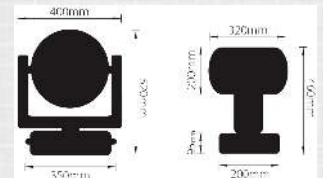
Technical Specifications & Features:

- Lamp: Osram NEOLUX Stage 295W lamp (7800K , 2000hours)
- Lens: 3-lens HQ optical group
- Beam Angle: 4.0°
- Operation Mode: DMX, Master/slave, Auto
- DMX 512 control channel: 16CH ; Supported with RDM
- Pan: 540degree (16bit) & Tilt: 280degree (16bit) with 3-phase Motors
- Auto-Repositioning
- Supplied with Folding Clamps
- Color Wheel: 13 colors + open, with rainbow effect
- Rotating Gobo Wheel: 14 gobo (5-glass gobos) + open
- Functions: Strobe(1-13times/s), Frost (0%-100%), Focus
- Prism: 8 facet prism +24 facet prism – both Rotating with Overlay
- Voltage: AC100-240V, 50/60Hz ; with Powercon IN & OUT
- Power consumption: 400W
- Product Size: 328X250X542mm ~ N.W: 15kg





Dimensions



LED Moving Head ZOOM Wash 3725

Item Code:- DMHW-3725 rgbw

A reasonably high power of 900 watts LED Moving Head Zoom Wash Light (similar to **Quantum** Wash...), using 37pcs of 25W 'Osram' 4-in-1 RGBW Lamps. The zoom range can from 10° to 60° - it can be a narrow beam light as well as a wide wash light. The light is very suitable for the Stage performance, Theatre, TV Studio, rental and other entertainment places.

Technical Specifications & Features:

- High-Power RGBW 4-in-1 LEDs 37 x 25w OSRAM make (900w)
- 16-bit Smooth resolution for PAN & TILT movement
- 540° PAN & 270° TILT
- Special Ring control effect
- Beam angle: 10 to 60 degrees Zoom
- 0-100% linear Flicker-Free Dimming
- Electronic Strobe Effect with variable speed
- DMX operation – 15/27 DMX channels, 2-modes
- LCD Display for setting all parameters
- Master-slave operation with TEST function
- Power: 100-240 VAC 50/60 Hz, 1000w



Back View

LED mini-B Zoom Wash - RGBWw 7x40

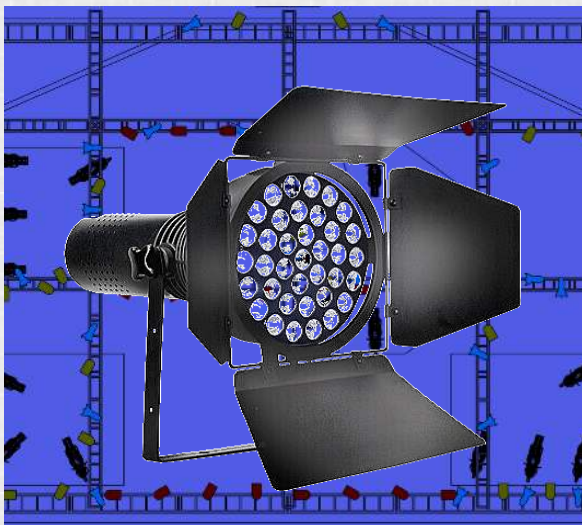
Item Code: DLMB-740

This mini-B moving head fixture is a smallest LED Wash light, with 280 watts of power packed in a very compact housing weighing only 7 Kg. Using 7 Nos. of 40w RGBA Osram Lamps producing highly intensified light - with a smooth & flicker-free dimming, wide zoom, ranging from 5° to 55° that makes this little luminaire extremely versatile. The central LED can be controlled separately than the outer ring LEDs. Highly recommended for TV Studios / Theatres / Concert Lighting applications.

Technical Specifications & Features:

- High-Power RGBA LED Lamps: 7 x 40W (280 watts)
- Zoom: 5° to 55°
- Controls: BAS 17CH / BAS 21CH / EXT 21CH / EXT 29CH DMX channels ~ with RDM
- High speed PAN & TILT movements - 16-bit
- Ring Control & Central LED independent control
- Electronic strobe @ 25 f/sec
- True-1 IN & OUT for mains (supplied with 1x Mains & 1x DMX Link cable)
- Power: 100 – 240VAC – 50/60 Hz, 300 watts

NEW Products...



LED Auto-Show Light - CW 31x10w

Item Code: DLAS-13110 cw

This LED Auto-Show / Car Display Light / Motor-Show Light (also known as "**JOLLY**" light by some...) is mainly used for booth lighting of car display exhibitions as well as for TV shoots. The light source uses CREE imported LED lamp beads, high brightness, pure colour temperature, to meet the requirements of high demand auto show lamps. The high colour temperature of 6500k, which is 1000k higher than the standard sunlight colour temperature, and it is very suitable for bright colour body and ideally suits for automotive lighting applications that require detailed textures.

Technical Specifications & Features:

- Light Source: High-Power 31/37 x 10w White CREE)
- Beam Angle: 20° / 25° (supplied with Diffusor Filter)
- Supplied with 4-Leaf Barndoors
- Controls: 2 DMX channels
- Control mode : Master/Slave, DMX-512
- Dimmer : 0-100% with regulated constant colour control
- Color temperature : 6500K & Ra ≥ 70
- Powercon IN & OUT for mains (supplied with 1x Mains & 1x DMX Link cable)
- Power: 100 – 240VAC – 50/60 Hz, 320 watts
- Dimensions: 320×320×570mm Weight: 9.5 Kg

NEW Products...



LED Moving Zoom Pixel Bar - RGBW 16x40 Item Code: DLPB-1640 rgbw

This LED Moving Pixel Batten is a high performance batten that incorporate 16 No. of 40 Watt RGBW LEDs packed tightly to give a full line of light. High quality optics ensure a smooth, homogenised output across this pixel batten through a broad pallet of saturated colours. The DMX control offers full pixel mapping capabilities. The unit features a Zoom ranging from 4 to 45 degrees, giving effects from a narrow angle light curtain to a wide angle wash light.

Technical Specifications & Features:

- High-Power RGBW LED Lamps: 16 x 40W (640 watts)
- Zoom: 4° to 45°
- Controls: 3 DMX Modes (78 total channels) ~ with RDM **(1:1 matching Elation Chorus Line-16)**
- Motorised TILT of 220 degrees - 16-bit
- Pixel Control with each LED independently controllable.
- Two independent Zoom control zones
- Powercon IN & OUT for mains (supplied with 1x Mains & 1x DMX Link cable)
- Power: 100 – 240VAC – 50/60 Hz, 700 watts
- Dimensions: 1068 x 189 x 290 mm Weight: 19.5 Kg

NEW Products...



LED Linear Pixel Bar - RGBWAUV 18x12

Item Code: DLPB-1812 rgbwauv

This 1-meter LED Linear Pixel Batten is a high-performance fixture featuring 18 tightly packed 12W 6-in-1 RGBWAUV LEDs, delivering a vibrant, continuous line of light. Advanced optics provide a smooth, uniform output with a wide range of rich, saturated colors. DMX control enables comprehensive pixel mapping, while the UV light enhances the visual impact when used solo or combined with other colors.

Technical Specifications & Features:

- High-Power RGBW LED Lamps: 18x 12W (216 watts)
- Controls: 4- Mode with 6, 10, 54 & 108 DMX Channels
- 25 degrees Optics
- Pixel Control with each LED independently controllable.
- Powercon IN & OUT for mains (supplied with 1x Mains & 1x DMX Link cable)
- Power: 100 – 240VAC – 50/60 Hz, 220 watts
- Dimensions: 100 x 74 x 151 cm Weight: 5 Kg

NEW Products...



LED JDC-1000 Strobe : RGB +W

Item Code: DLJS-1000 rgbw

This LED Hi-Power **1m** long Linear Strobe, similar to JDC LINE 1000. The strobe incorporates two segments of RGB pixel mapping effect with White Strobe in the middle. Each pixel segment can be split into upper and lower part which gives additional creative & stunning effect!

Technical Specifications & Features:

- Strobe: 200 Nos. of White LED Lamps (1000 watts)
- Backlight: 400 x RGB LED Lamps (100 Watts) with Pixel Mapping
- Controls: M1: 16 / M2: 34 / M3: 84 / M4: 47 / M5: 98 / M6: 158 / M7: 38
- Beam Angle: 150/64° half peak ; 160/70° field angles
- Powercon Tru-1 IN & OUT for mains (supplied with 1x Mains & 1x DMX Link cable)
- Power: 100 – 240VAC – 50/60 Hz, 1200 watts
- Dimensions: 1000 x 205 x 75 mm Weight: 13.0 Kg

Also available in 0.5m length as JDC-500



Effect...



LED Moving Head STROBE 1000

Item Code:- DMST-1000 rgb

This high-power moving head Strobe contains a single tube element with an incredible clear, bright white output and combines that with a surrounding full face of RGB LED power, creating an AURA effect, utilises 480 high quality LED's which can be divided into 8 separate sections, and additionally the bright white tube also can be divided into 4 sections. The Strobe also features dynamic movement with a 16 bit, 185° tilt range, allowing you to place effects exactly where and when you want them to be.

Technical Specifications & Features:

- 750w Strobe Power - with 144 x 3535 5W 6500K LEDs
- 250w RGB LEDs for Aura Effect - with 480 x 5050 0.5W RGB 3in1 LEDs
- 185 deg TILT movement with 8-16 bit
- IP-65 Weatherproof Housing
- DMX-512 & RDM (Bi-directional Comm.)
- Control Modes: 9CH / 14CH / 42CH
- Multiple electronic strobe and variable dimming Curve modes
- Temperature controlled fans for optimized operation and low noise
- Seetronic IP65 sockets and connectors for DMX In/ Out and Power In/out
- Illuminated Graphic LCD Display
- Power: 100-240 VAC 50/60 Hz, 1000w



IP WASH 40 - RGBW 4010

Item Code: DLIW-4010 rgbw

This is a RGBW LED IP-65 rated waterproof LED WASH Light - highly suitable for permanent Outdoors installations, Using high power 40 Nos. of 10w rgbw LED lamps (400w), is a highly intensified type of LED light that produces rainbow of lighting options which are fully dimmable (0 to 100% smooth & flicker-free dimming). Highly recommended for monuments / building illuminations and general area colour washes...

Technical Specifications & Features:

- High-Power RGBW LED Lamps: 40 x 10W (400 watts)
- Optics: 42Ø lens, 25° or 10/40° asymmetrical
- DMX-512 operation – 4 / 8 DMX channels
- Auto operation with built-in programs, color-changing, color fade, strobe, color macros
- IP65, Outdoor version, Die-casting Aluminum housing in Black or Grey
- Heavy-duty Heat-Sink and a low-noise Fan for efficient heat dissipation
- Dimensions: 466 * 123 * 338 mm
- True1 waterproof connectors for IN & OUT for mains and DMX data.
- Power: 100-240V ~ 50/60Hz, 400 watts



Back View



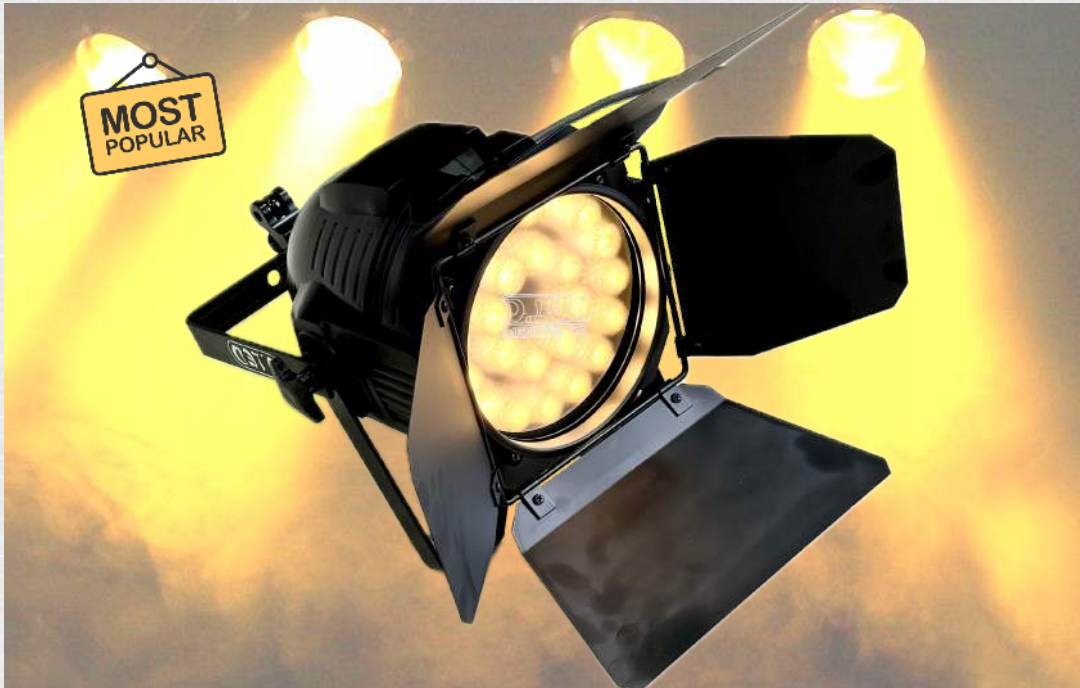
LED PAR - RGBW 1810

Item Code: DLP-1810 rgbw

This 4-in-1 RGBW LED PRO PAR, 180W is a highly intensified type of LED light that produces rainbow of lighting options which are fully dimmable (0 to 100% smooth & flicker-free dimming), brighter and requires less energy to operate than the conventional PAR lights. Highly recommended for general area lighting & colour washes...

Technical Specifications & Features:

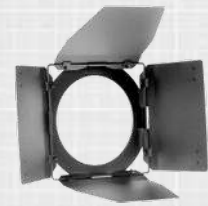
- High-Power 4-in-1 Single-Chip RGBW LED Lamps: 18 x 10W (180 watts)
- Optics: 15 or 25 degree
- DMX-512 operation – 8 DMX channels
- Auto operation with built-in programs, color-changing, color fade, strobe, color macros
- Wireless DMX ready– using special 3-pin XLR sockets with Power Pin
- Heavy-duty Heat-Sink and a low-noise Fan for efficient heat dissipation
- Master-slave operation
- Powercon IN & OUT for mains (supplied with 1x Mains & 1x DMX Link cable)
- Power: 90 – 260VAC – 50/60 Hz, 185 watts



Back View



4Leaf Barndoors



LED PAR - C/W WHITE

Item Code: DLP-2410 ww/cw

This Hi-Power LED PRO PAR, Warm-White or Cool-White (for TV Studios), +220W, is a highly intensified type of LED light which is an ideal replacement for the conventional 1 Kw Sealed Beam PAR-64 (much higher power output than PAR64...) - fully dimmable (0 to 100% smooth & flicker-free dimming), brighter and requires less energy to operate than the conventional PAR lights. Highly recommended for key & general area lighting...

Technical Specifications & Features:

- Single Color : Warm White – High-Power TX LED Lamps: 24 x 10W (+220 watts o/p)
- Optics: 20 degree
- DMX-512 operation – 1 DMX channel (can patch like a dimmer channel...)
- Master-slave operation with AUTO function
- Wireless DMX ready– using special 3-pin XLR sockets with Power Pin
- Heavy-duty Heat-Sink and a low-noise Fan for efficient heat dissipation
- **Optional 4-Leaf Barn-doors & Diffuser Filter (extra cost...)**
- Powercon IN & OUT for mains (supplied with 1x Mains & 1x DMX Link cable)
- Power: 90 – 260VAC – 50/60 Hz, 245 watts



4Leaf Barndoors



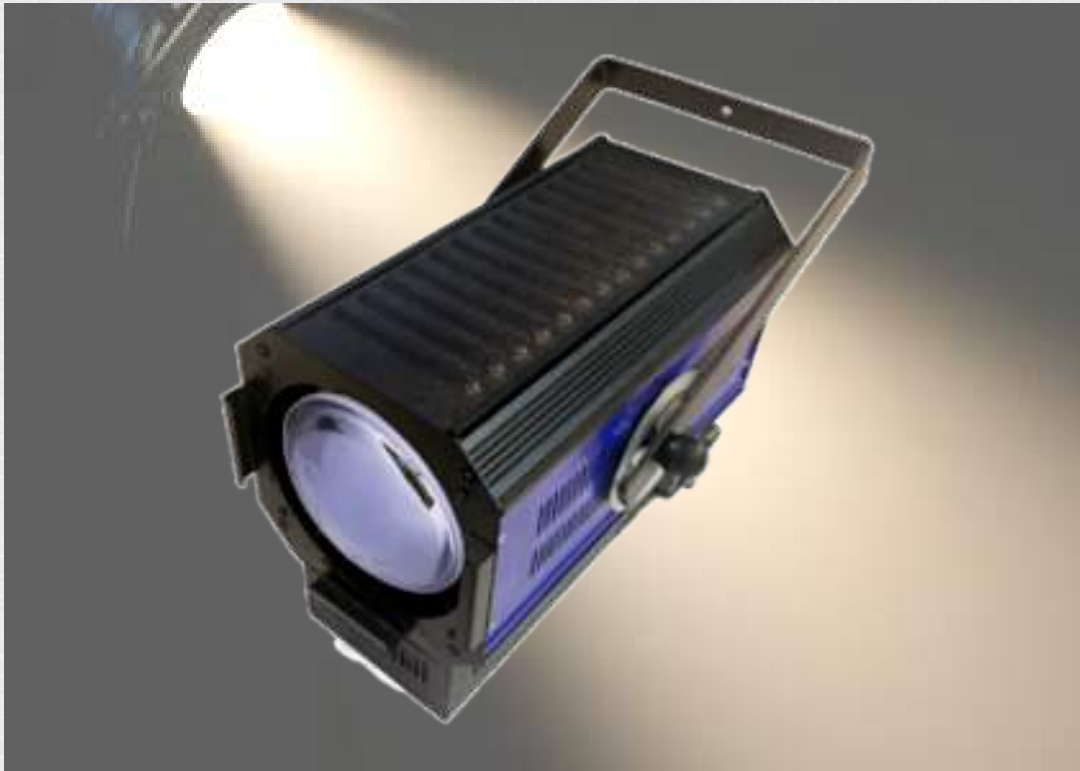
LED MINI PAR - RGBW 710

Item Code: DLMP-710 rgbw

This 4-in-1 RGBW LED **mini PAR**, 70W, is a compact fixture - ideal for black-box / small auditorium(s) having low heights and less space... fully dimmable (0 to 100% smooth & flicker-free dimming), brighter and requires less energy to operate than the conventional PAR lights.

Technical Specifications & Features:

- High-Power 4-in-1 Single-Chip RGBW LED Lamps: 7 x 10W (70 watts)
- Available Optics: 35 degree
- DMX-512 operation – 6 DMX channels
- Auto operation with built-in programs, color-changing, color fade, strobe, color macros
- Wireless DMX ready– using special 3-pin XLR sockets with Power Pin
- Heavy-duty Heat-Sink and a low-noise Fan for efficient heat dissipation
- Optional 4-Leaf Barn-doors (extra cost...)
- Powercon IN & OUT for mains (supplied with 1x Mains & 1x DMX Link cable)
- Power: 90 – 255VAC – 50/60 Hz, 80 watts



Rear View



LED Pebble-Convex Spot Light

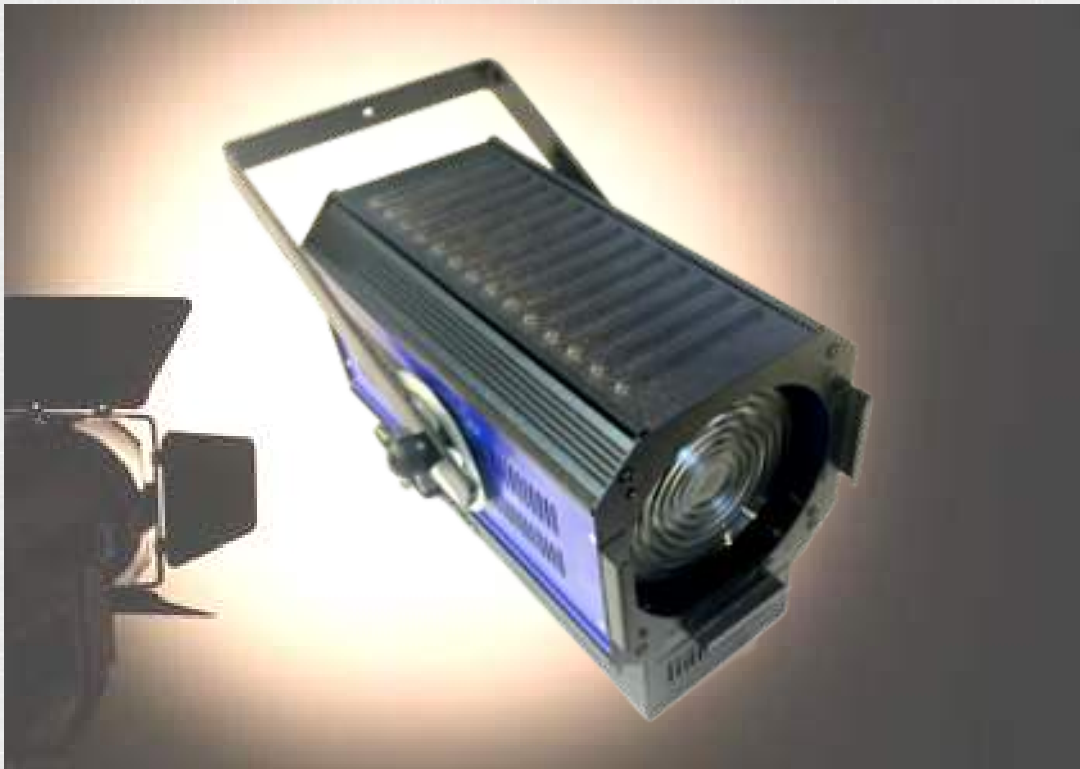
Item Code: DLPC-200L ww/cw

LED Pebble-Convex (PC) SPOT LIGHT, 200w, popularly known as “PC Spot’ light - uses a modified plano-convex lens with a pebbled effect on the plano (flat) side which gives the beam its characteristic soft edge. It is a classic theatre light fixture, with an adjustable beam angle and is fully dimmable (0 to 100% smooth & flicker-free dimming). The pebble convex lens uses the efficiency of the plano convex lens and gives the light a softer edge. Highly suitable for 'controlled' area lighting. Available in Warm-White or Cool-White.

Technical Specifications & Features:

- Single Chip Hi-power COB LED Lamp: 200w
- Special 150mm dia. Pebble-Convex Lens, producing slightly soft edged beam without Hot-Spots
- Beam Angle: manually adjustable from 5° to 60° (rear knob)
- DMX operation - 1 DMX channel (can patch as a Dimmer Ch.) with Master-slave & AUTO function
- Wireless DMX ready– using special 3-pin XLR sockets with Power Pin
- 'Liquid-Cooled' Copper Heat-Sink and a low-noise Fan for efficient heat dissipation

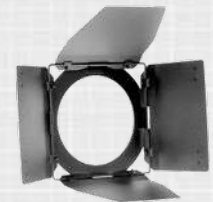
- Powercon IN & OUT for mains (supplied with 1x Mains & 1x DMX Link cable)
- Power: 90 – 255VAC – 50/60 Hz, 210 watts



Rear View



4Leaf Barndoors



LED Fresnel Spot Light

Item Code: DLFS-200L ww/cw

LED Fresnel SPOT LIGHT, 200w, is a soft-edged spotlight with more control over beam angle than floods. The lens is a series of stepped concentric circles on the front and pebbled on the back. It is a classic theatre light fixture, with an adjustable beam angle and is fully dimmable (0 to 100% smooth & flicker-free dimming). Highly suitable for general area / fill lighting. Available in Warm-White or Cool-White.

Technical Specifications & Features:

- Single Chip Hi-power COB LED Lamp: 200w
- Special 150mm dia. Fresnel Lens, producing an even soft edged beam
- Beam Angle: manually adjustable from 10° to 70° (rear knob)
- DMX operation - 1 DMX channel (can patch as a Dimmer Ch.) with Master-slave & AUTO function
- Wireless DMX ready– using special 3-pin XLR sockets with Power Pin
- 'Liquid-Cooled' Copper Heat-Sink and a low-noise Fan for efficient heat dissipation
- Optional 4-Leaf Barn-doors (extra cost...)
- Powercon IN & OUT for mains (supplied with 1x Mains & 1x DMX Link cable)
- Power: 90 – 255VAC – 50/60 Hz, 210 watts



Rear View



LED Fresnel Spot Light RGBAL

Item Code: DLFS-400 rgbal

A High-Power LED Fresnel Spot Light – in **400 watts** 5-in-1 “RGBAL” COB LED Lamp, is a soft-edged spotlight with more control over beam angle than floods. Suitable for both Stage & Studio Lighting applications... Light output is **more than 2000w Tungsten** Fresnel Spots! Having an adjustable beam angle and is fully dimmable (0 to 100% smooth & flicker-free dimming). Highly suitable for general wash & back lighting applications.

Also available in single colour Warm-White or Cool-White.

Technical Specifications & Features:

- LED Source: 400 watts 5-in-1 RGBAL COB LED
- High-efficiency optical system - Fresnel Lens, producing an even soft edged beam
- Beam Angle: manually adjustable from 15° to 65° (rear knob)
- Control: RDM & DMX-512 with 12 & 5 ch. modes
- Both 3-pin & 5-pin DMX In & OUT connectors
- LCD Display with 4-button selection
- Four Selectable Dimmer Curves
- Powercon IN & OUT for mains (supplied with 1x Mains & 1x DMX Link cable)
- Power: 100 – 250VAC – 50/60 Hz, 410 watts



IRIS



Gobo Frame



LED Profile Spot 200 - ww/cw

Item Code:-DLPS-200 ww/cw

These high-power LED FIXED Profile Spot lights produce clearly defined spots of light (hard-edged or soft-edged) and are used in many theatrical applications including solo spots, key lighting, creating static gobo projections, or where a highly controlled & precise beam is required. It features standard beam shaping shutters (more flexible and accurate version of the barndoors...) and has a suitable slot to add an Optional Gobo frame or Iris diaphragm (extra cost...).

Technical Specifications & Features:

- High-Power 200w Single Chip LED Lamp - Warm White or Cool White
- with 4-Edge Shutters for framing effects
- Fixed Beam Angles, with : 19° / 26° / 36° / 50° Optics
- DMX operation - 3 DMX channels
- Wireless DMX ready- using special 3-pin XLR sockets with Power Pin
- 'Liquid-Cooled' Copper Heat-Sink and a low-noise Fan for efficient heat dissipation
- Master-slave & AUTO function
- Powercon IN & OUT for mains (supplied with 1x Mains & 1x DMX Link cable)
- Power: 90 – 250VAC – 50/60 Hz, 210 watts

★ Optional Lens Tubes available in beam angles of 5° or 10° for Long-throw applications.



Rear View



LED Molefay Blinder RGBW

Item Code:- DLB-215 rgbw

300 watts of hi-power RGBW LED Audience Blinder – producing 16-million colors with brilliant light radiation & having extremely long lamp life, low power consumption, minimal heat emission & virtually maintenance free compared to any conventional Halogen “Molefay” Blinders using PAR-36 DWE 120v/650w lamps...

Technical Specifications & Features:

- 2-Eyes “MOLEFAY” design
- High-Power RGBW LED COB Lamps: 2 x 150W (300w)
- Optics: 80 degree Wide Flood
- DMX operation – with 10 DMX channels
- Individual control of 2-Eyes
- Wireless DMX ready – using special 3-Pin XLR socket with 5vdc
- Vertically & Horizontally expansion possible to build 4/8-way or more...
- Possible to create larger MATRIX for Pixel mapping effects.
- Powercon IN & OUT for mains (supplied with 1xMains & 1xLink cables)
- Power: 90 – 250VAC – 50/60 Hz, 325 watts



Rear View



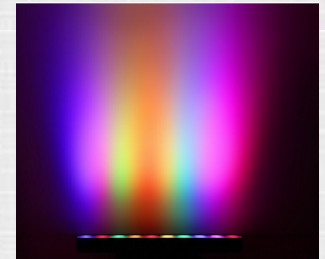
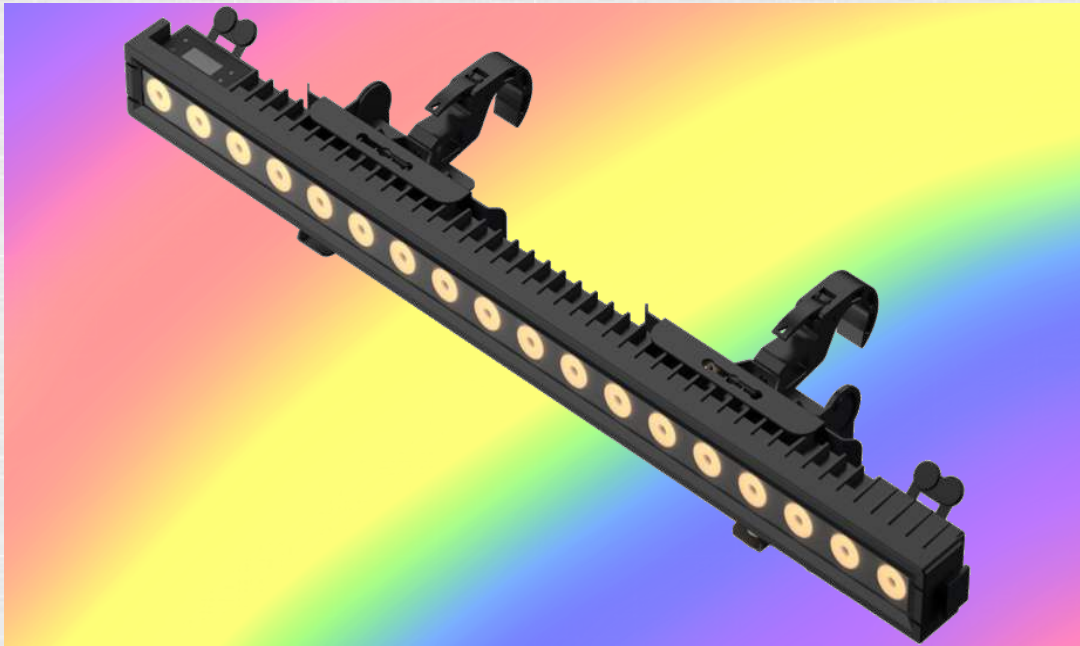
LED Molefay Blinder - ww/cw

Item Code:- DLB-410 ww/cw

400 watts of hi-power 4-Eye LED Audience 'Molefay' Blinder – producing a high output brilliant light radiation & having extremely long lamp life, low power consumption, minimal heat emission & virtually maintenance free compared to any conventional Halogen "Molefay" Blinders using PAR-36 DWE 120v/650w lamps...

Technical Specifications & Features:

- 4-Eyes "MOLEFAY" design
- High-Power WW or CW LED COB Lamps: 4 x 100W (400w)
- Optics: 80 degree Wide Flood
- DMX operation – with 1 DMX channel (can be patched as Dimmer Ch.)
- Wireless DMX ready – using special 3-Pin XLR socket with 5vdc
- Powercon IN & OUT for mains (supplied with 1xMains & 1xLink cables)
- Power: 90 – 250VAC – 50/60 Hz, 435 watts



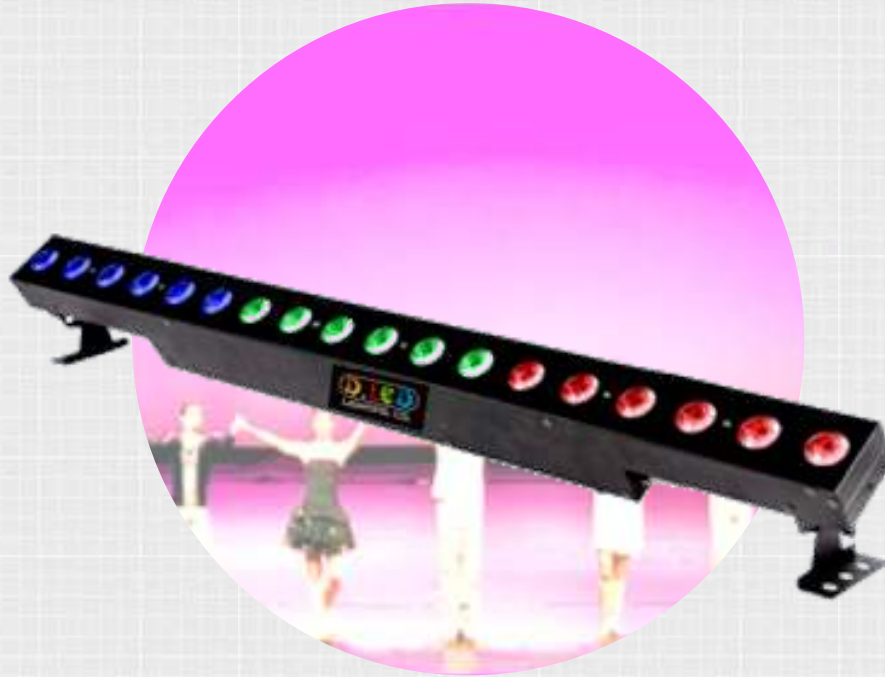
ARC WASH 180 - RGBW 1810

tem Code: DLAW-1810 rgbw

This Batten is IP-65 rated waterproof LED Linear WASH Light - highly suitable for permanent Outdoors installations, Using 18 Nos. of 10w rgbw LED lamps (180w), is a compact & low profile LED light batten that produces rainbow of lighting options which are fully dimmable (0 to 100% smooth & flicker-free dimming) as well as can create PIXEL effects. Highly recommended for Cycloramas, Monuments Arches/Walls illuminations and other colour pixel visual effects...

Technical Specifications & Features:

- High-Power RGBW LED Lamps: 18 x 10W (180 watts)
- Optics: 29ø lens, 25° or 40°
- DMX-512 operation – 5/ 10 / 66 DMX channels for Pixel Controls
- Auto operation with built-in programs, color-changing, color fade, strobe, color macros
- IP65, Outdoor version, Die-casting Aluminum housing in Black or Grey
- Heavy-duty Heat-Sink and a low-noise Fan for efficient heat dissipation
- Dimensions: 1000 * 170 * 220 mm
- True1 waterproof SEETRONICS connectors for IN & OUT for mains and DMX data.
- Power: 100-240V ~ 50/60Hz, 190 watts



LED Cyclorama Wash Light 1810

Item Code:- DLCW-1810 rgbw

LED Cyclorama / Wall Wash 1m long Linear Light, 180w RGBW - produces a very even wash – highly suitable for CYCLORAMA Lighting. It is IP-65 rated Waterproof fixture and can be used for outdoor (Architectural) applications as well...

Technical Specifications & Features:

- High-Power 4-in-1 RGBW LED Lamps: 18 x 10W (180 watts)
- 25° or 45° Wide Optics for even wash effect – suitable for Cycloramas or Wall Wash
- DMX operation - 4/12/20/32/44/72 or 80 DMX channels option
- Auto operation with built-in programs, color-changing, color fade, strobe, color macros
- IP-65 fully Weatherproof Outdoor fixture
- Power IN & OUT for mains and DMX IN & OUT cables provided
- Power: 90 – 250VAC – 50/60 Hz, 190 watts

Rear View



LED Cyclorama COB Wash 1215

Item Code:- DLCW-1215 rgb

LED COB Wash Light, 180w RGB - produces a very even wash – highly suitable for CYCLORAMA Lighting. It is IP-65 rated Waterproof fixture and can be used for outdoors for Architectural applications as well...

Technical Specifications & Features:

- High-Power 3-in-1 RGB LED Lamps: 12 x 15W (180 watts)
- 60° Wide Optics for even wash effect – suitable for Cycloramas or Wall Wash
- DMX operation. 5 or 9 DMX channels option
- Auto operation with built-in programs, color-changing, color fade, strobe, color macros
- IP-65 fully Weatherproof Outdoor fixture
- Power IN & OUT for mains and DMX IN & OUT cables provided
- Power: 90 – 250VAC – 50/60 Hz, 190 watts



Stand



LED Follow Spot 150

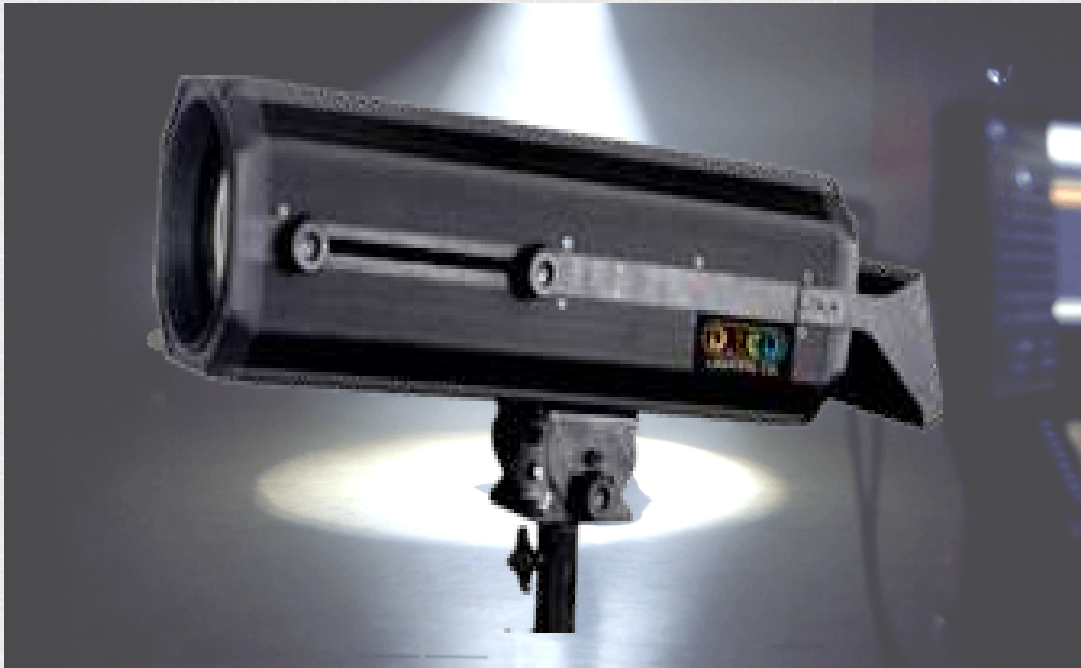
Item Code:- DLFL-150L

A portable & light weight 150w LED Follow Spot with brightness comparable to conventional **1000w HMI** Follow Spots.

Emitting a tight beam powered by a bright 150 W LED it will highlight actors at far distances. Has a built-in CTO filter which lowers color temperature to match tungsten lamps complimented with super smooth LED dimming and an extremely fast electronic strobe, making it a useful fixture for any performance.

Technical Specifications & Features:

- Light Source: 150W White LED
- Control: On-board control panel with buttons & faders
- Focus: Manual focus
- Color Wheel: 5 colors + open
- Color Temperature filters: 6500K, 4500K & 3200K
- Dimmer: 0-100% smooth dimming
- Iris: 5-100% linear adjustable
- Cooling: Forced Air cooling
- Fixture Dimension: L530×W325×H190(mm) and Net Weight: 11Kg (without stand)
- Power: AC 90-240V, 50/60Hz – 200watts



On Stand...



LED Follow Spot 400

Item Code:- DLFL-400

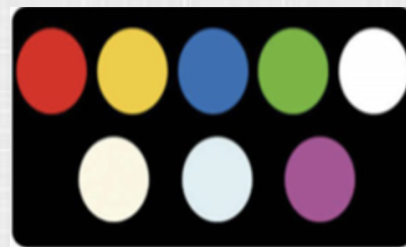
A Hi-Power 400w LED Follow Spot with brightness comparable to conventional **+2000w HMI** Follow Spots... Emitting a tight beam powered by a bright 400 W LED it will highlight actors at far distances. Has a built-in CTO filter which lowers color temperature to match tungsten lamps complimented with super smooth LED dimming and an extremely fast electronic strobe, making it a useful fixture for any performance.

Technical Specifications & Features:

- Light Source: 400W White LED
- Control: On-board control panel with buttons & faders
- Focus: Manual focus
- Color Wheel: 5 colors + open
- Color Temperature filters: 6500K, 4500K & 3200K
- Dimmer: 0-100% smooth dimming
- Iris: 5-100% linear adjustable
- Cooling: Forced Air cooling
- Variable Beam adjustment for Narrow & Wide Angle
- Supplied with 1x Tripod & Flight Case
- Fixture Dimension: L882 × W245 × H301 (mm) and Net Weight: 14Kg (without stand)
- Power: AC 90-240V, 50/60Hz – 550watts



Back Panel



LED Follow Spot 1000

Item Code:- DLFL-1000

A Hi-Power 1000w LED Follow Spot with brightness comparable to conventional **+4000w XENON** Follow Spots... Emitting a tight beam powered by a bright 1000w Chip it will highlight actors at very far distances. Has a built-in CTO & CTB filters to match colour temperature of either tungsten or HMI lamps - complimented with super smooth LED dimming and an extremely fast electronic strobe, making it a useful fixture for any performance.

Technical Specifications & Features:

- Light Source: 1000W White LED Chip with CRL>90
- Control: On-board control panel with buttons & faders + S/w External DMX control panel
- Focus: Linear Electronic Focussing
- Color Wheel: 5 colors + open
- Color Temperature filters: 6500K, 5600, 4500K & 3200K
- Dimmer: 0-100% smooth dimming
- Beam Angle: 6-10° linear adjustable
- Cooling: Forced Air cooling
- Effective Range: 80m to 200m
- Supplied with 1x Tripod & Flight Case
- Fixture Dimension: L1205 × W375 × H422 (mm) and Net Weight: 38Kg (without stand)
- Power: AC 90-240V, 50/60Hz – 1100watts

Also available in 1800w LED power - brightness comparable to over 5K HMI...



LED Moving Head Spot 200

Item Code:- DLMH-180

A 180w LED Moving Head Spot light fixture, suitable for area small to medium sized Auditoriums/Theatre and Club/Discotheque lighting...

Technical Specifications & Features:

- Single Chip Hi-power White COB LED Lamp: 180w
- 16-bit Smooth resolution for PAN & TILT movement
- 540° PAN & 270° TILT
- 1 Color Wheel with 9 dichroic filters plus open with Bi-Color & Rainbow Effect
- 1 Rotating Gobo wheel with 7 inter-changeable Gobos plus open
- 1 Static Gobo wheel with 9 inter-changeable Gobos plus open
- 2 Rotating 3-Facet & 9-facet Prisms with adjustable speed
- 0-100% linear Flicker-Free Dimming
- Projection Beam Angle: 20°
- Electronic Strobe Effect with variable speed
- DMX operation – 16/17 DMX channels, 2-modes
- LCD Display for setting all parameters
- Master-slave operation with TEST function
- Power: 100-240 VAC 50/60 Hz, 250w

ABOUT US

Our company **Dhawan Stagecrafts (P) Ltd.**, having successfully completed **64** years, is based out in Delhi believes in owning the products that are designed and built to the highest quality standards and without any compromise in components and equipments.

We are engaged in offering prominent range of luminaries and sound equipments that are used for both indoor and outdoor application for international and professional shows.

Some of the products offered by us are "**D.LED**" LED lights – for Stage / Theatre / TV Studio / Concerts, Water Screen/Curtain, Trussing, "Liteputer" DMX Dimmer Systems, RGB & Green Laser Projectors, "Pangolin" Laser Software & Hardware, LED Video Screens, Hi-Power Audio Systems, UHF Wireless Microphones, RF Antennas, Distribution & Combiner Systems from "RF Venue" and other Project Equipment and Services.

Our well trained team of professionals keeps themselves abreast with the emerging market trends so that they can assist us in providing products and services that matches with the industry. It is with the support and dedication of our team that we have been able to achieve and maintain strong customer base.

Authorised Distributors / Dealers for:







Sales & Service by:

Dhawan STAGECRAFTS (P) LTD.

**Khasra No. 625A, Zero Road, Ghitorni,
New Delhi-110030 (INDIA)**

Email:

General Enquiries-1 : info@dhawans.com

General Enquiries-2 : dhawanstagecrafts@gmail.com

Sales : sales@dhawans.com

Accounts : accounts@dhawans.com